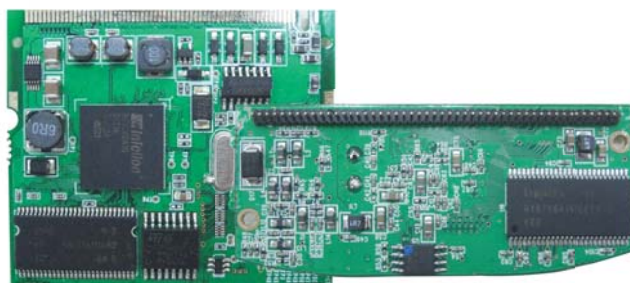


## 200 Mbps HomePlug AV Module

Models: MP6300 or SM6300



Visit us on the Web at [asokausa.com](http://asokausa.com) for a complete catalog of our products, applications and services.

The Asoka® HomePlug® AV Modules allow developers to easily embed HomePlug AV technology into products to add support for powerline networking at speeds up to 200 Mbps. The modules are based on Intellon's advanced INT6300 baseband MAC/PHY IC and include an AFE IC, crystal oscillator circuit, SDRAM, flash, receive path filter, transmit path filter and amplification, plus power supply support circuitry.

Available with either a mini-PCI or 50-pin SIP connector, the modules are designed for horizontal mounting with a choice of either 16M or 64M SDRAM.

- Designed for small-footprint devices such as Ethernet adapters and set-top boxes running embedded applications
- Standard Definition (SD) and High-Definition (HD) video distribution, including Internet Protocol Television (IPTV) distribution
- Backbone for Wi-Fi, UWB, and wireless USB
- Broadband Internet access sharing and online gaming
- Music and video streaming and file transfer
- Printer and other peripheral sharing
- Voice over IP (VoIP)
- Security cameras

## 200 Mbps HomePlug AV Module

### Features

- HomePlug AV compliant for throughput up to 200 Mbps
- Mechanically compatible with Mini-PCI Type IIIA connector (model MP6300)
- 124-pin edge connector physically compatible with AMP P/N 1318228-1 0.8mm socket
- Intellon INT6300 MAC/PHY IC features
- MII multimedia and management interface
- 1024/256/64/16/8-QAM, QPSK, BPSK, and ROBO
- 128-bit AES link encryption with key management ensures secure powerline communications
- Windowed OFDM with noise mitigation based on patented line synchronization techniques improves data integrity in noisy conditions
- Dynamic channel adaptation and channel estimation maximizes throughput in harsh channel conditions
- TDMA and priority-based CSMA/CA channel access schemes maximize efficiency and throughput
- Integrated Quality of Service (QoS) Enhancements include contention-free access, four level priority-based contention access, and multi-segment bursting
- ToS and CoS packet classifiers
- Supports IGMP managed multicast sessions

### Models

- MP6300 – 124-pin mini-PCI connector
- SM6300 – 50-pin SIP connector



Asoka USA Corporation  
 Headquarters  
 558 Pilgrim Drive, Suite H  
 Foster City, CA 94404  
 + 1.650.286.1700 phone  
 + 1.650.286.1790 fax  
[www.asokausa.com](http://www.asokausa.com)